

SONG 10M POP 1 A POP CHORDS

Chord progression for SONG 10M POP 1 A POP CHORDS. The key signature is A major (three sharps: F#, C#, G#) and the time signature is 4/4. The progression consists of 34 measures, with some measures containing multiple chords.

Measures and Chords:

- 1A: A
- 2: F#-
- 3: D
- 4: E7
- 5: A
- 6: E7
- 7: F#-
- 8: D
- 9A: A
- 10: E7
- 11: F#-
- 12: D
- 13: F#-
- 14: B-
- 15: B-
- 16: B-
- 17A: C#
- 18: C#
- 19: F#-
- 20: F#-
- 21: A
- 22: A
- 23: D
- 24: E
- 25A: A
- 26: A
- 27: D
- 28: E
- 29: A
- 30: A
- 31: A
- 32: A
- 33A: A
- 34: A

33A END

SONG 10M POP 1 C POP CHORDS

Chord progression for SONG 10M POP 1 C POP CHORDS. The progression is written in 4/4 time, starting with a treble clef and a key signature of one flat (Bb).

The chords and their positions are as follows:

- 1A: C
- 2: A-
- 3: F
- 4: G7
- 5: C
- 6: G7
- 7: A-
- 8: F
- 9A: C
- 10: A-
- 11: F
- 12: G7
- 13: C
- 14: A-
- 15: F
- 16: G7
- 17A: C
- 18: A-
- 19: F
- 20: G7
- 21: C
- 22: A-
- 23: F
- 24: G
- 25A: C
- 26: A-
- 27: F
- 28: G
- 29: C
- 30: A-
- 31: F
- 32: G
- 33A: C
- 34: END

SONG 10M POP 1 E POP CHORDS

1A E C#- A B7

2

3

4

5 E B7 C#- A

6

7

8

9A E C#- A B7 E C#- A B7

10

11

12

13 E B7 C#- A E B7 C#- A

14

15

16

17A C#- F#-

18

19

20

21 G# C#-

22

23

24

25A E A B E

26

27

28

29 E A B E

30

31

32

33A END

34

SONG_10M_POP_1_G_POPCHORDS

Handwritten musical notation for a song, featuring a treble clef, a key signature of one sharp (F#), and a 4/4 time signature. The notation consists of a series of staves, each containing a measure number and a chord symbol. The chords are written in a stylized, handwritten font. The notation is organized into measures, with some measures containing multiple chords or symbols. The notation is as follows:

1A G E- C D7

2 D7 E- C

3 G E- C D7

4 G E- C D7

5 G E- C D7

6 G E- C D7

7 G E- C D7

8 G E- C D7

9A G D7 E- C

10 G D7 E- C

11 G D7 E- C

12 G D7 E- C

13 E- A-

14 E- A-

15 E- A-

16 E- A-

17A B E-

18 B E-

19 B E-

20 B E-

21 G C D

22 G C D

23 G C D

24 G C D

25A G C D G

26 G C D G

27 G C D G

28 G C D G

29 G C D G

30 G C D G

31 G C D G

32 G C D G

33A END

34

SONG_10M_POP_2_A_POPCHORDS

Handwritten musical notation for measures 1-4. The key signature is A major (three sharps: F#, C#, G#) and the time signature is 4/4. The notation shows a treble clef, a key signature of three sharps, and a 4/4 time signature. The notes are represented by diagonal lines. Chords are written above the staff: A, Bb0, B-, and E7. Measure numbers 1A, 2, 3, and 4 are written below the staff.

Handwritten musical notation for measures 5-8. The notation shows a treble clef and a key signature of three sharps. The notes are represented by diagonal lines. Chords are written above the staff: A, Bb0, B-, and E7. Measure numbers 5, 6, 7, and 8 are written below the staff.

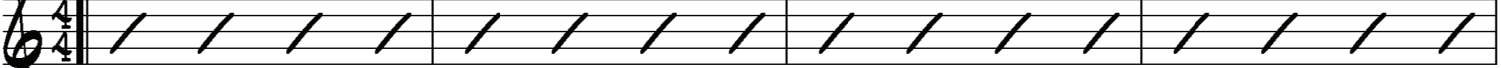
Handwritten musical notation for measures 9-12. The notation shows a treble clef and a key signature of three sharps. The notes are represented by diagonal lines. Chords are written above the staff: A and Esus. Measure numbers 9A, 10, 11, and 12 are written below the staff.

Handwritten musical notation for measures 13-16. The notation shows a treble clef and a key signature of three sharps. The notes are represented by diagonal lines. Chords are written above the staff: F#-, B-, and C#7. Measure numbers 13, 14, 15, and 16 are written below the staff.

Handwritten musical notation for measures 17-18. The notation shows a treble clef and a key signature of three sharps. The notes are represented by diagonal lines. Chords are written above the staff: F#-. Measure numbers 17A END and 18 are written below the staff.

SONG_10M_POP_2_C_POPCHORDS

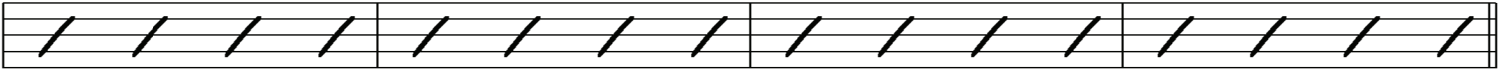
C C#o D- G7



1A 2 3 4

Detailed description: This block contains the first line of a musical score. It features a treble clef and a 4/4 time signature. Above the staff, the chords C, C#o, D-, and G7 are written for measures 1 through 4 respectively. The staff itself contains four measures, each filled with four diagonal slashes representing a whole note. Below the staff, the measure numbers 1A, 2, 3, and 4 are printed.

C C#o D- G7



5 6 7 8

Detailed description: This block contains the second line of a musical score. It features a treble clef and a 4/4 time signature. Above the staff, the chords C, C#o, D-, and G7 are written for measures 5 through 8 respectively. The staff itself contains four measures, each filled with four diagonal slashes representing a whole note. Below the staff, the measure numbers 5, 6, 7, and 8 are printed.

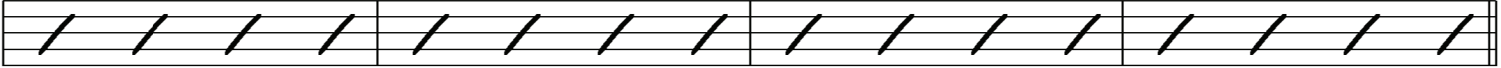
C Gsus



9A 10 11 12

Detailed description: This block contains the third line of a musical score. It features a treble clef and a 4/4 time signature. Above the staff, the chords C and Gsus are written for measures 9 and 10 respectively. Measures 11 and 12 are empty. The staff itself contains four measures, each filled with four diagonal slashes representing a whole note. Below the staff, the measure numbers 9A, 10, 11, and 12 are printed.

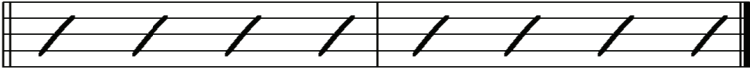
A- D- E7



13 14 15 16

Detailed description: This block contains the fourth line of a musical score. It features a treble clef and a 4/4 time signature. Above the staff, the chords A-, D-, and E7 are written for measures 13, 14, and 15 respectively. Measure 16 is empty. The staff itself contains four measures, each filled with four diagonal slashes representing a whole note. Below the staff, the measure numbers 13, 14, 15, and 16 are printed.

A-

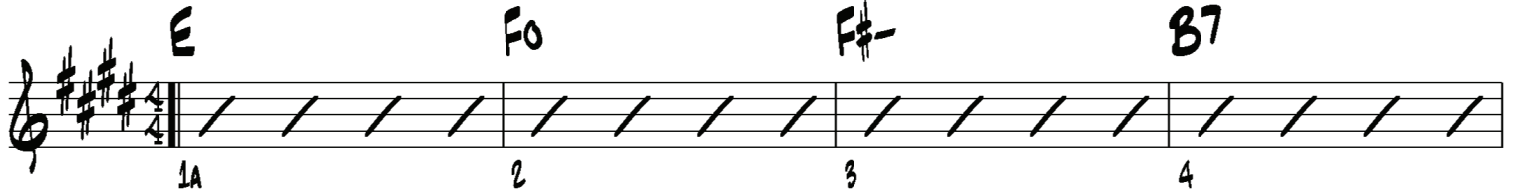


17A END 18

Detailed description: This block contains the fifth and final line of a musical score. It features a treble clef and a 4/4 time signature. Above the staff, the chord A- is written for measure 17. Measure 18 is empty. The staff itself contains two measures, each filled with four diagonal slashes representing a whole note. Below the staff, the measure numbers 17A END and 18 are printed.

SONG_10M_POP_2_E_POPCHORDS

Handwritten musical notation for measures 1A through 4. The key signature is three sharps (F#, C#, G#) and the time signature is 4/4. The notes are represented by diagonal slashes. Chords are written above the staff: E, F0, F#-, and B7.



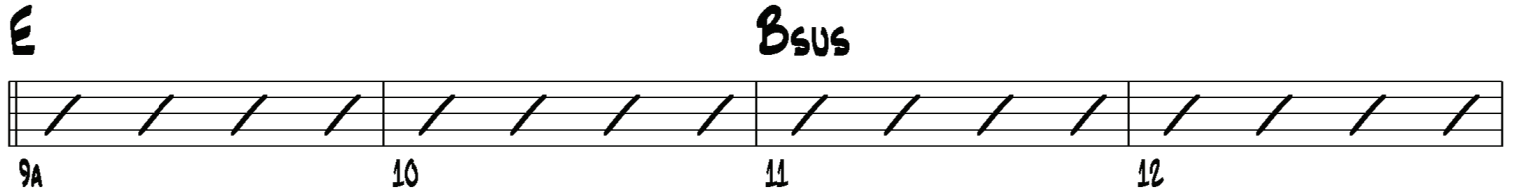
1A 2 3 4

Handwritten musical notation for measures 5 through 8. The notes are represented by diagonal slashes. Chords are written above the staff: E, F0, F#-, and B7.



5 6 7 8

Handwritten musical notation for measures 9A through 12. The notes are represented by diagonal slashes. Chords are written above the staff: E and Bsus.



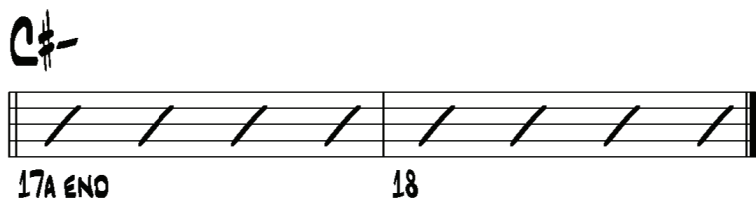
9A 10 11 12

Handwritten musical notation for measures 13 through 16. The notes are represented by diagonal slashes. Chords are written above the staff: C#-, F#-, and G#7.



13 14 15 16

Handwritten musical notation for measures 17A and 18. The notes are represented by diagonal slashes. The chord C#- is written above the staff for measure 17A. The notation ends with a double bar line.



17A END 18

SONG_10M_POP_2_G_POPCHORDS

Handwritten musical notation for measures 1-4. The staff is in G major (one sharp) and 4/4 time. The notes are represented by diagonal slashes. Chords are written above the staff: G (measure 1), Abo (measure 2), A- (measure 3), and D7 (measure 4). Measure numbers 1A, 2, 3, and 4 are written below the staff.

Handwritten musical notation for measures 5-8. The staff is in G major (one sharp) and 4/4 time. The notes are represented by diagonal slashes. Chords are written above the staff: G (measure 5), Abo (measure 6), A- (measure 7), and D7 (measure 8). Measure numbers 5, 6, 7, and 8 are written below the staff.

Handwritten musical notation for measures 9-12. The staff is in G major (one sharp) and 4/4 time. The notes are represented by diagonal slashes. Chords are written above the staff: G (measure 9) and Dsus (measure 10). Measure numbers 9A, 10, 11, and 12 are written below the staff.

Handwritten musical notation for measures 13-16. The staff is in G major (one sharp) and 4/4 time. The notes are represented by diagonal slashes. Chords are written above the staff: E- (measure 13), A- (measure 15), and B7 (measure 16). Measure numbers 13, 14, 15, and 16 are written below the staff.

Handwritten musical notation for measures 17-18. The staff is in G major (one sharp) and 4/4 time. The notes are represented by diagonal slashes. The chord E- is written above the staff. Measure numbers 17A END and 18 are written below the staff.

SONG_10M_POP_3_A_LONGCHOROS

A

1A 2 3 4

A

5 6 7 8

B-

9A 10 11 12

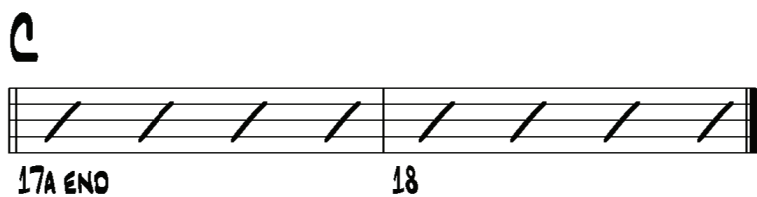
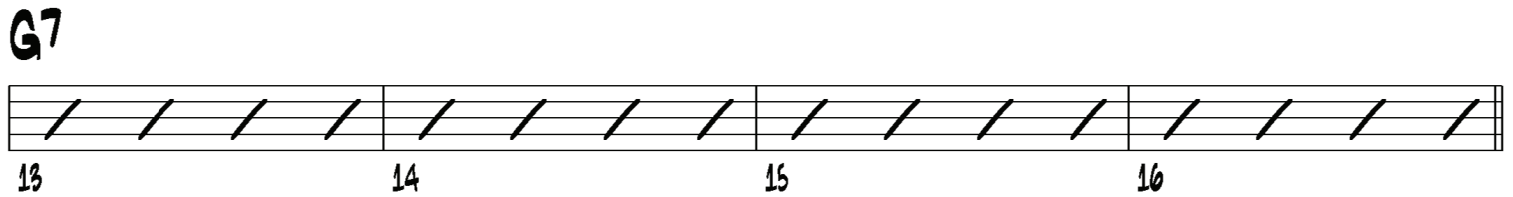
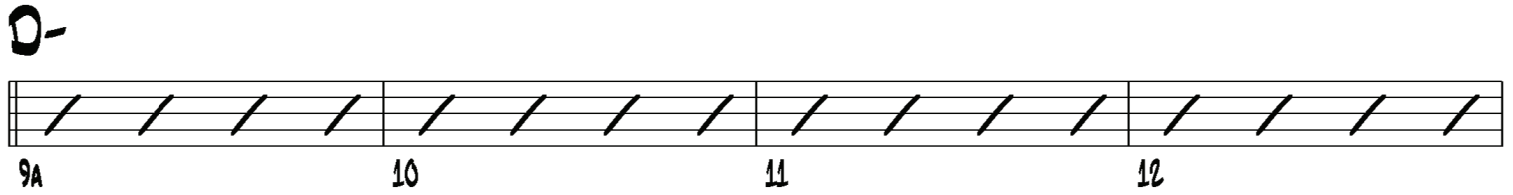
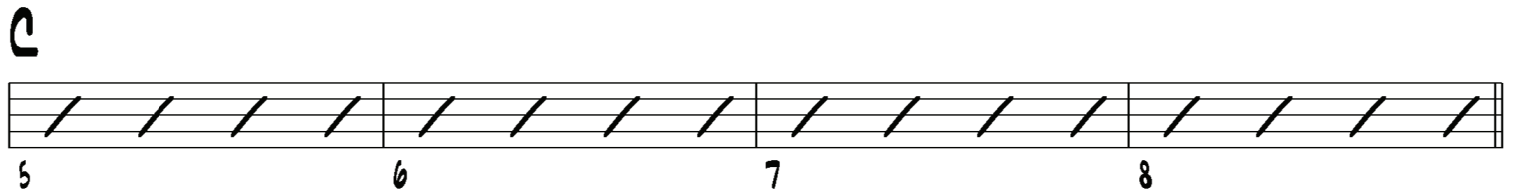
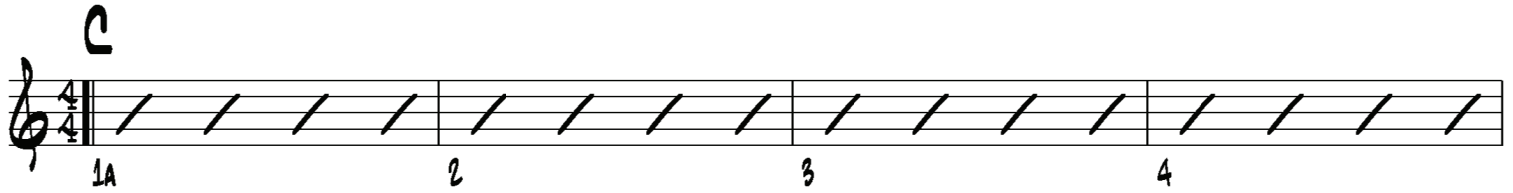
E7

13 14 15 16

A

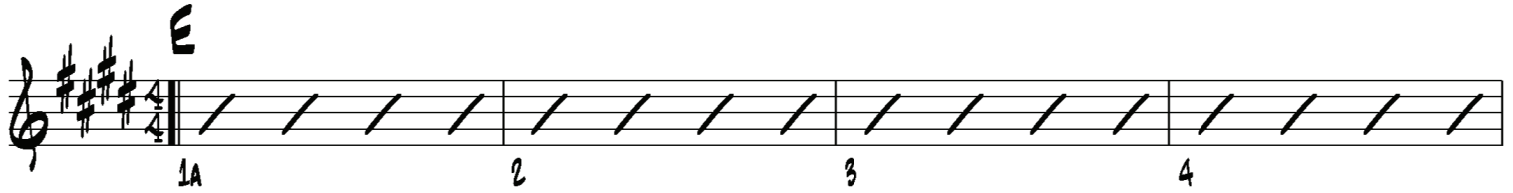
17A END 18

SONG_10M_POP_3_C_LONGCHORDS



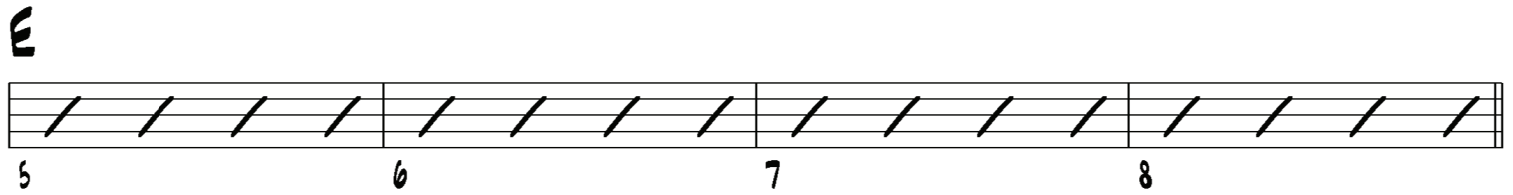
SONG_10M_POP_3_E_LONGCHOROS

E



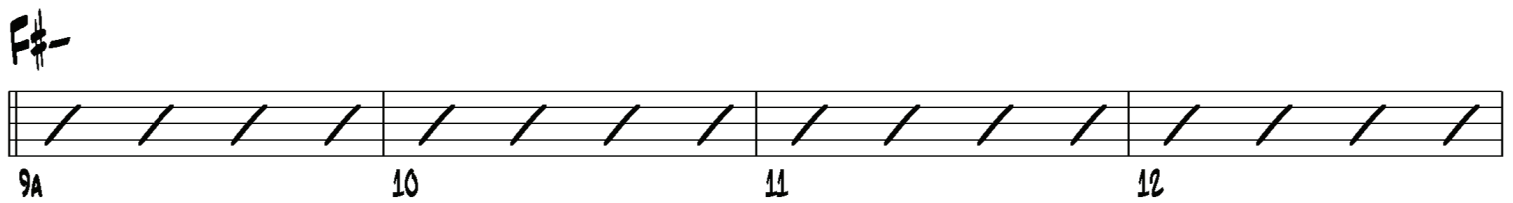
1A 2 3 4

E



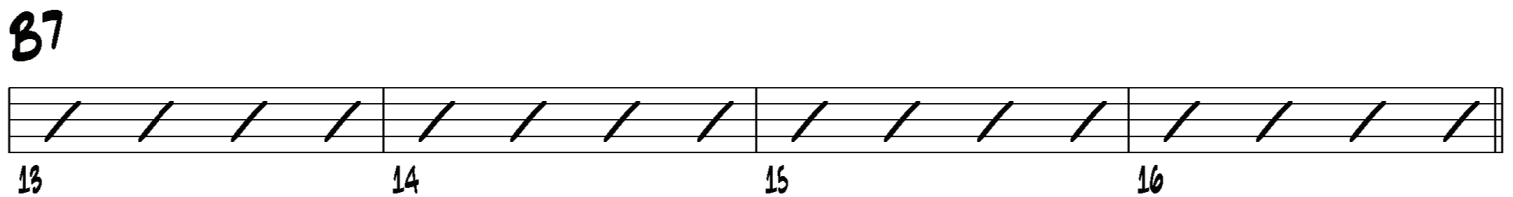
5 6 7 8

F#-



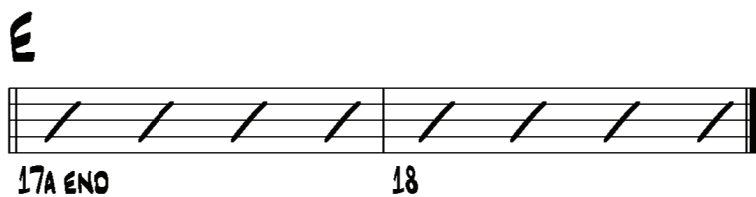
9A 10 11 12

B7



13 14 15 16

E



17A END 18

SONG_10M_POP_3_G_LONGCHORDS

